

LED EXPLOSION PROOF LIGHT F SERIES

Applications

This luminaire can be used as spot light, down light and tunnel light which can provide general illumination in hazardous locations, such as:

- Oil refineries and Gas stations
- Oil and gasoline loading docks
- Distilleries
- Painting manufacturing plants
- Pumping stations
- Mines
- Vessels
- Other high humidity, high temperature, dusty locations

Features

High efficacy: up to 140lm/W

- CRI>80
- Surface mounting and pendant installations
- Wide and narrow optics for uniform illumination
- Copper free aluminum
- High vibration resistance

Ratings and Certifications

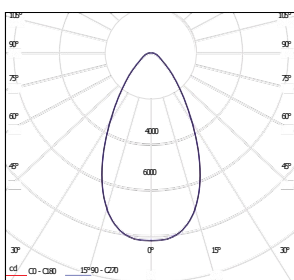
NEMA 4X, IP66

- UL1598/UL1589A/UL844 CSA
- C22.2 No.137/No.250.0
- Class I,Division 1,Groups C,D Class I,Division 2,Groups A,B,C,D Class II,Division 1,Groups E,F,G Class II,Division 2,Groups E,F,G Class III

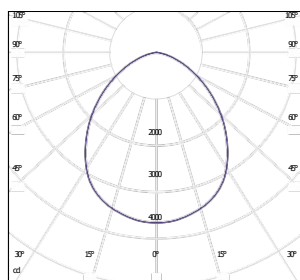


- Marine and Wet Locations
- IECEX
- ATEX
- 10 years warranty
- L70 rating for more than 150000 hours

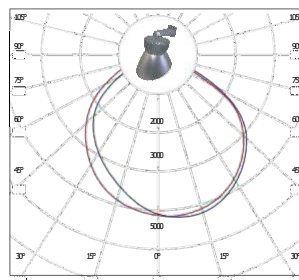
Professional Light Distribution



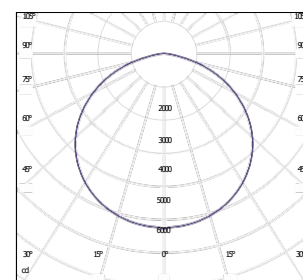
60°



90°



100°



120°



LED EXPLOSION PROOF LIGHT F SERIES

Typical model specification

Product Number	Wattage	CCT	Voltage	Lumens	Working Hours	CRI
EX-40W FXYZ	40	4000K/5000K/5700K	AC100-277V or AC200-480V	5600	10 years	>80
EX-50W FXYZ	50	4000K/5000K/5700K	AC100-277V or AC200-480V	7000	10 years	>80
EX-60W FXYZ	60	4000K/5000K/5700K	AC100-277V or AC200-480V	8400	10 years	>80
EX-70W FXYZ	70	4000K/5000K/5700K	AC100-277V or AC200-480V	9800	10 years	>80
EX-80W FXYZ	80	4000K/5000K/5700K	AC100-277V or AC200-480V	11200	10 years	>80
EX-90W FXYZ	90	4000K/5000K/5700K	AC100-277V or AC200-480V	12600	10 years	>80
EX-100W FXYZ	100	4000K/5000K/5700K	AC100-277V or AC200-480V	14000	10 years	>80

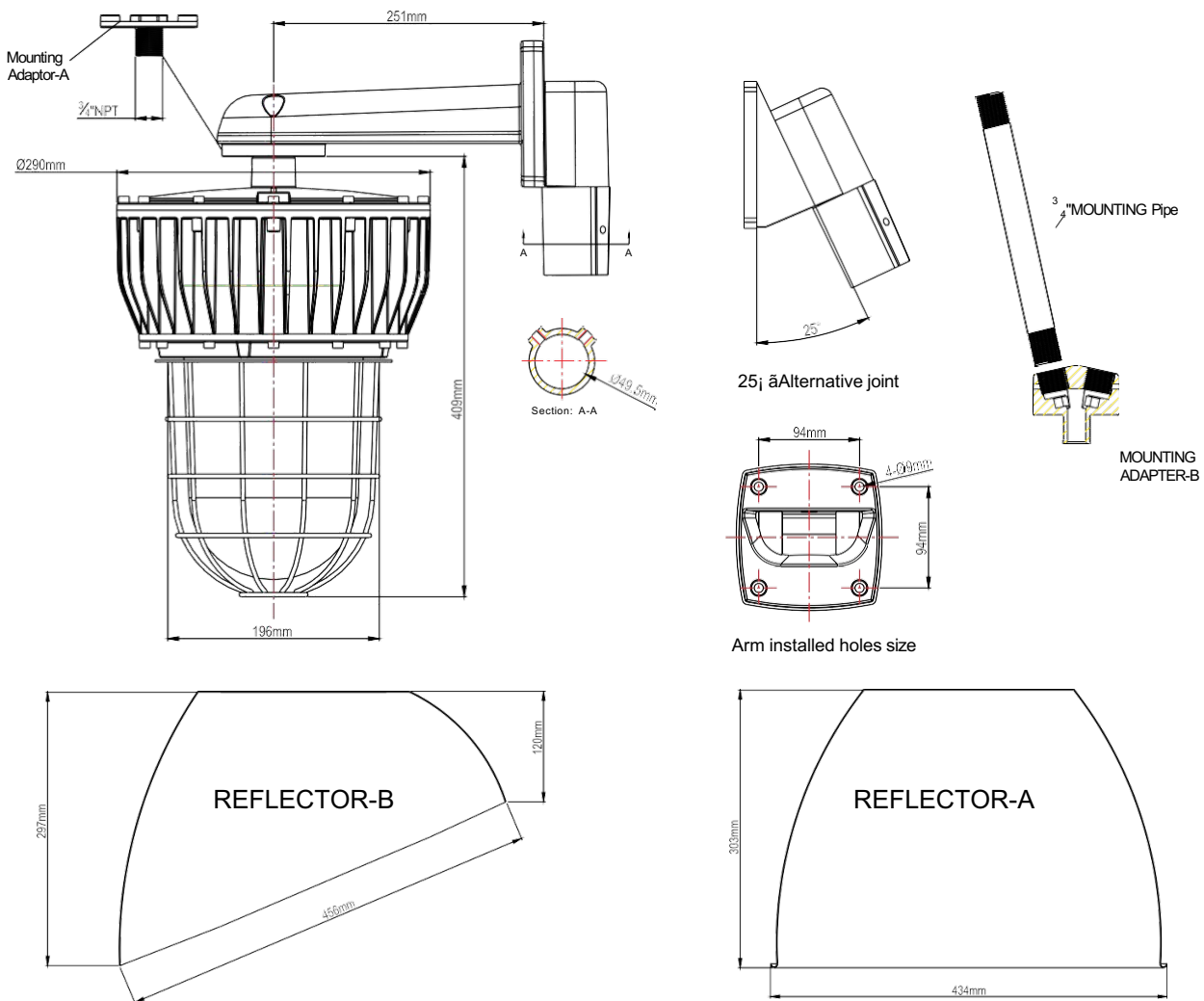
“F”=Product series

“X”=D or N:Dimmable or non-dimmable

“Y”= CCT, from 3000~6500

“Z”=Beam angle:60°, 80°, 90°, 100°, 120°

Dimension



Regarding Installation

Our engineers have focused on explosion proof light development more than 5 years, so our installation methods are always easy and fast. You even don't need a professional person to complete it.



Wall mounted



Ceiling mounted



Ceiling mounted



Pole mounted

Ordering Guide

EX

40W/50W/60W/70W/80W/90W/100W

FXYZ

Explosion Proof light

Wattage

"F"=Product series

"X"=D or N:Dimmable or non-dimmable

"Y"= CCT, from 3000~6500

"Z"=Beam angle:

60°, 80°, 90°, 100°, 120°